

SPEC-D *Tuning*

2000-2003 NISSAN SENTRA PROJECTOR HEADLIGHTS INSTALLATION INSTRUCTIONS



If you experience any difficulties that the instruction did not cover, Please seek local auto shop for advise.
Please wear protection before you work on your vehicle.

An assistant is helpful when removing the front bumper.

Please be careful while working with the bumper or body part to avoid scratching.

Do not make direct contact with the halogen bulb or the wire assembly until the unit has cooled down after use.

TOOLS AND SUPPLIES REQUIRED

Phillips Screwdriver

10mm Socket

Trim Pad Remover

1/2" Drive Ratchet

1/2" Drive Extensions (8 to 10 inches)

If your Headlight is Halo type, you also need:

Wire Stripper

Wire Crimper

4 Blue Quick Spike Wire Connectors

4 Blue Male Quick Wire Connectors

4 Blue Female Quick Wire Connectors

2 Red Wires (8 inch)

2 Black Wires (8 inch)

Product Part Numbers:

2LHP-SEN00-TM

2LHP-SEN00JM-TM



NISSAN SENTRA PROJECTOR HEADLIGHTS INSTALLATION INSTRUCTIONS



If you experience any difficulties that the instruction did not cover, Please seek local auto shop for advise.
Please wear protection before you work on your vehicle.
An assistant is helpful when removing the front bumper.
Please be careful while working with the bumper or body part to avoid scratching.
Do not make direct contact with the halogen bulb or the wire assembly until the unit has cooled down after use.



1. Space steer front wheels to the right



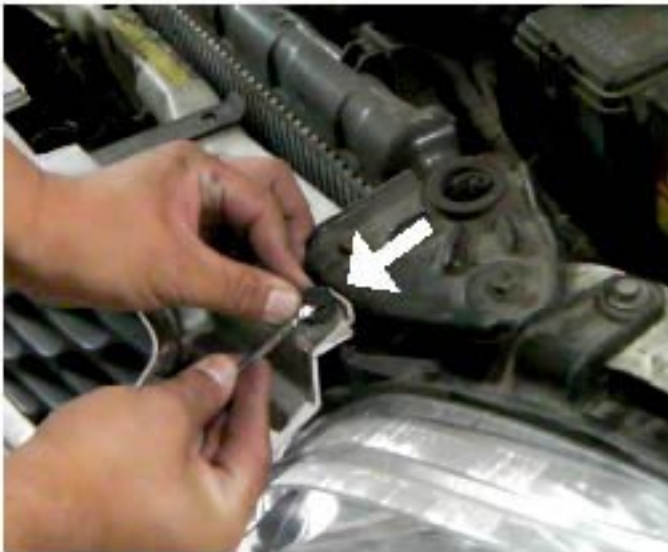
2. Remove one screw from the inside of the wheel well



3. Remove one screw to loosen the front bumper



4. Pull out the side of the bumper slightly



5. Remove one clip from the top of the front bumper



6. Remove one bolt from the top of the headlight



7. Remove one more bolt on the top of the headlight



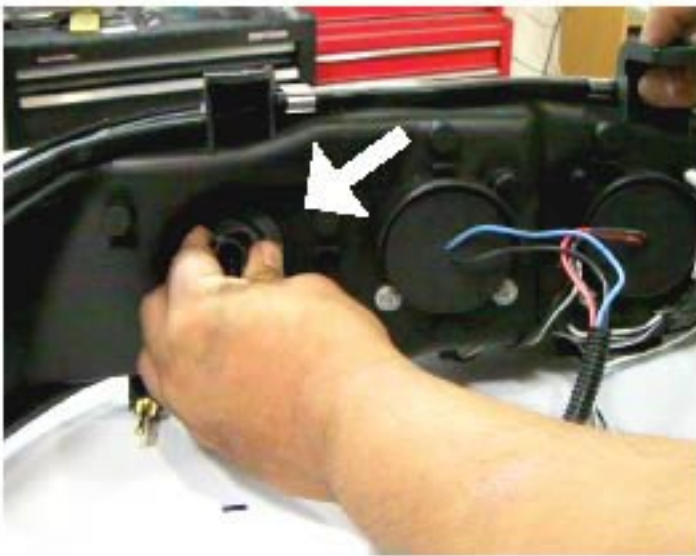
8. Use a flathead screwdriver to loosen the headlight



9. Remove the socket from the headlight



10. Remove the signal socket from the OEM headlight



11. Install the signal light socket to the new headlight



12. Connect all the connectors



13. Put the headlight to the original spot



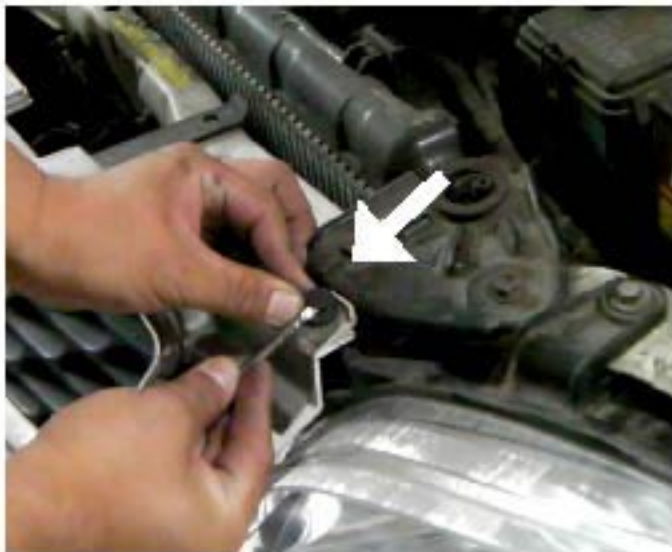
14. Hook the pin to fasten the headlight



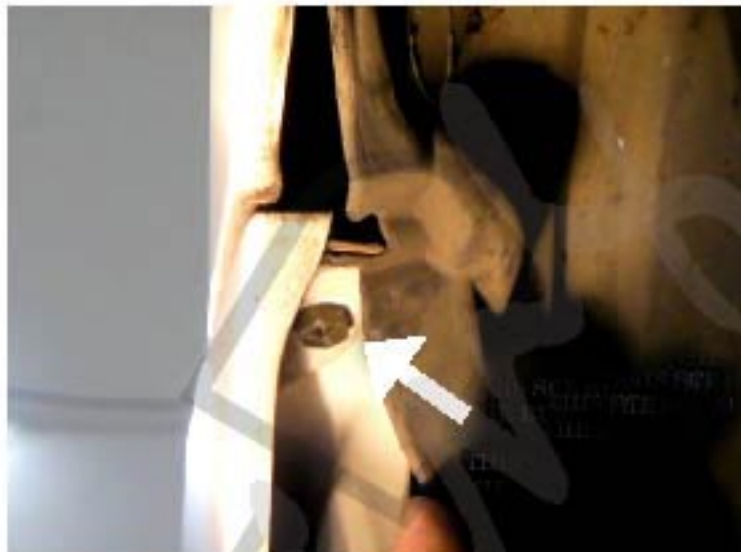
15. install one bolt at the top of the headlight



16. Install the other bolt to fasten the headlight



17. Install one clip for the front bumper



18. Install one screw to fasten the bumper



19. Install one screw inside wheel well
please repeat picture order from 1 to 19 for opposite side



20. The installation is now complete

