

# SPEC-D *Tuning*

## 1998-2004 MERCEDES BENZ SLK R170/W170 CL STYLE GRILLE INSTALLATION INSTRUCTIONS

If you experience any difficulties that the instruction did not cover, Please seek assistance at a local automotive shop

Please wear protection before you work on any vehicle.



An assistant is useful when removing the front bumper from your vehicle.

Please be cautious when working with the bumper or any parts belonging to the vehicle's body to prevent scratching.

Do not make direct contact with the halogen bulbs or the wire assembly until the unit has cooled down after use.

### TOOLS AND SUPPLIES REQUIRED

½" Drive Ratchet

8mm Socket

10mm Socket

### Product Part Numbers:

HG-BR17098JMCL



### MERCEDES BENZ SLK R170/W170 CL STYLE GRILLE INSTALLATION INSTRUCTIONS

If you experience any difficulties that the instruction did not cover, Please seek assistance at a local automotive shop

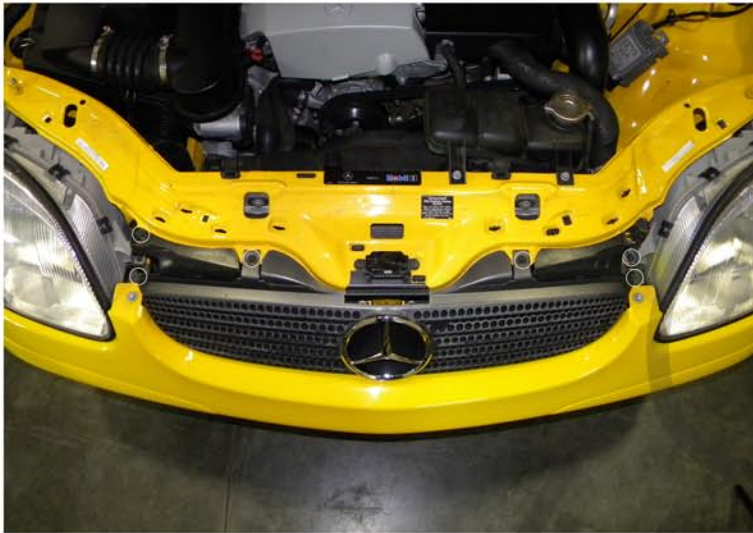
Please wear protection before you work on any vehicle.



An assistant is useful when removing the front bumper from your vehicle.

Please be cautious when working with the bumper or any parts belonging to the vehicle's body to prevent scratching.

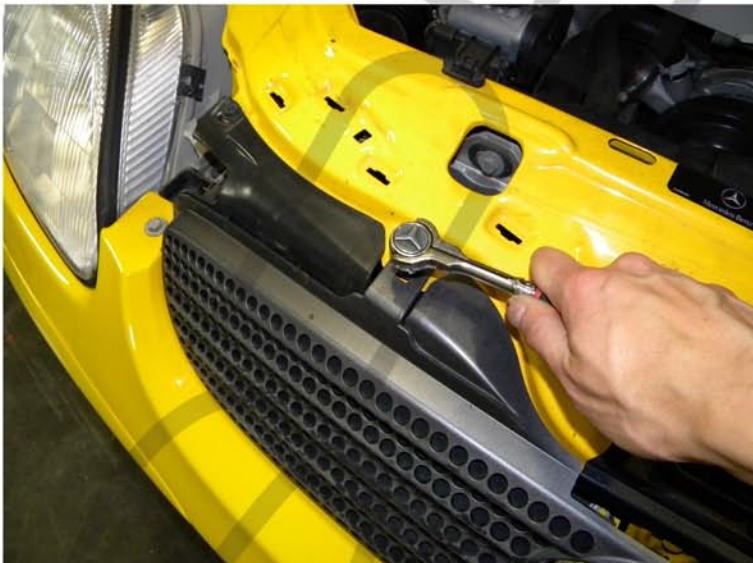
Do not make direct contact with the halogen bulbs or the wire assembly until the unit has cooled down after use.



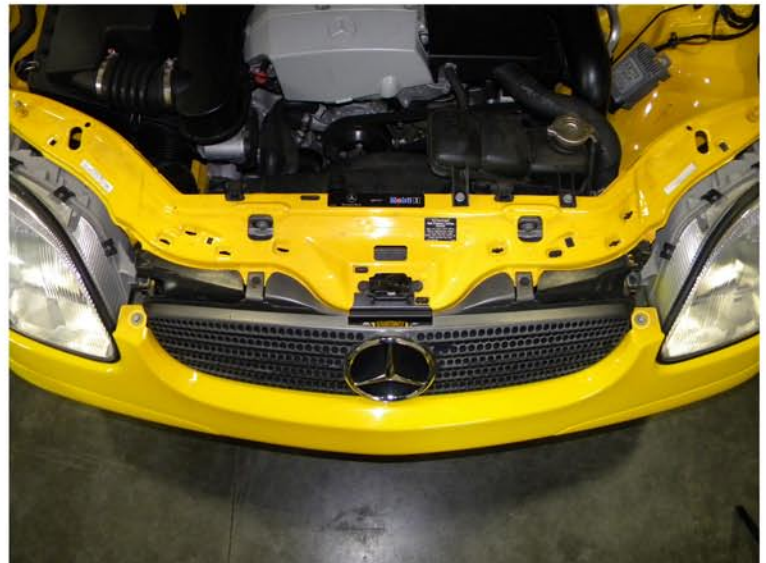
1. (6) 8mm screws location



2. Remove the (6) 8mm screws



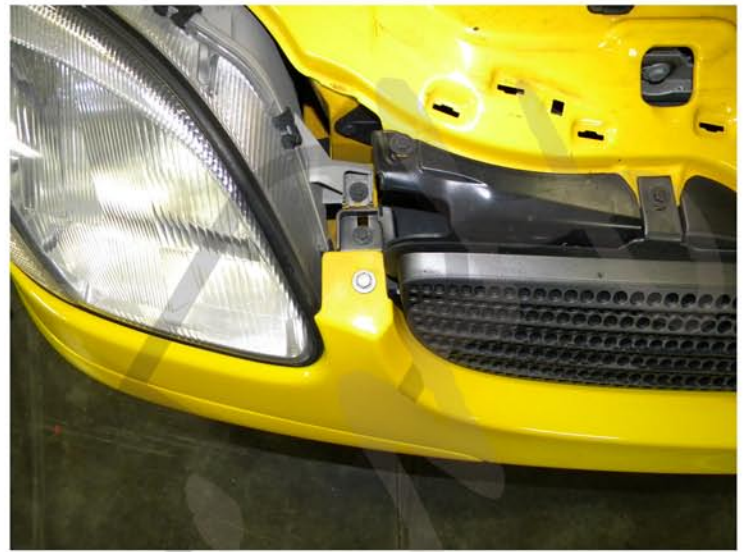
3. Remove the (6) 8mm screws



4. (2) 10mm bolts location



5. Remove the (2) 10mm bolts



6. (6) 10mm bolts location



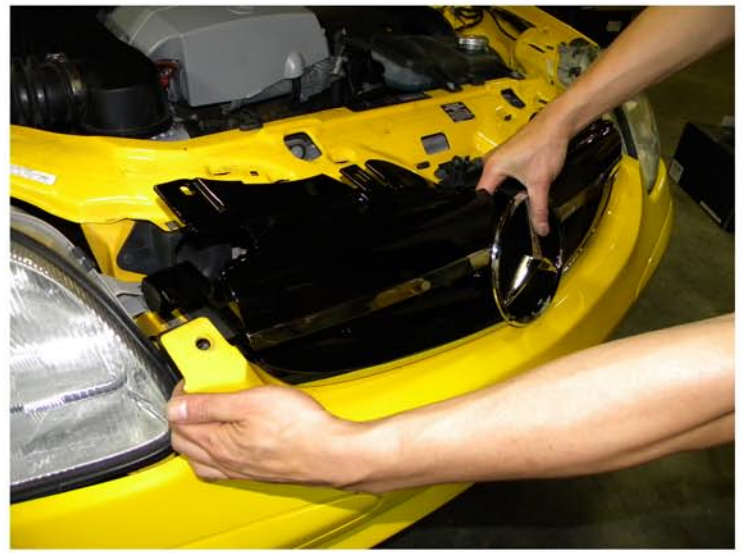
7. Remove the (2) 10mm bolts



8. Pull on top of the front bumper



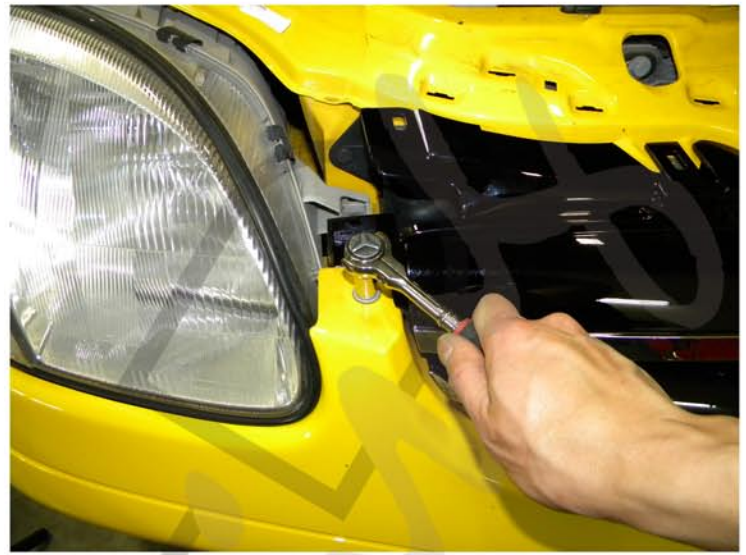
9. Remove the stock grill



10. Place the new grill in the stock location



11. Tighten the (2) 10mm bolts



12. Tighten the (2) 10mm bolts



13. Tighten the (6) 8mm screws



14. Tighten the (6) 8mm screws



15. Tighten the (6) 8mm screws



16. The installation is now complete