

SPEC-D *Tuning*

2003-2009 NISSAN 350Z SHORT SHIFTER INSTALLATION INSTRUCTIONS



If you experience any difficulties that the instruction did not cover, Please seek local auto shop for advise.
Please wear protection before you work on your vehicle.

An assistant is helpful when removing the front bumper.

Please be careful while working with the bumper or body part to avoid scratching.

Do not make direct contact with the halogen bulb or the wire assembly until the unit has cooled down after use.

TOOLS AND SUPPLIES REQUIRED

12mm Socket

10mm Socket

¼" Drive Ratchet

Product Part Numbers:

SS-350Z03-RS



NISSAN 350Z SHORT SHIFTER INSTALLATION INSTRUCTIONS



If you experience any difficulties that the instruction did not cover, Please seek local auto shop for advise.
Please wear protection before you work on your vehicle.
An assistant is helpful when removing the front bumper.
Please be careful while working with the bumper or body part to avoid scratching.
Do not make direct contact with the halogen bulb or the wire assembly until the unit has cooled down after use.



1. Start beneath the car where the shifter is located; remove the rubber boot cover



2. Remove a 12mm bolt connecting the short shifter and the shift link



3. From inside the car and unscrew the shift knob off the shifter



4. Take off the washer ring



5. remove the temperature control council from locking clips



6. Unplug the harness from the temperature control council



7. Remove the fabric padding from the top of the shifter



8. Unscrew four 10mm bolts from the bracket



9. Remove the bracket



10. Take-off the rubber shift boot



11. Take-off the smaller inner rubber shift boot



12. Unscrew three 10mm bolts



13. Take-off the triangle bracket



14. Pull up and out the original shifter



15. Replace with the short shifter



16. Place the bracket over the short shifter



17. Screw back on the three 10mm bolts



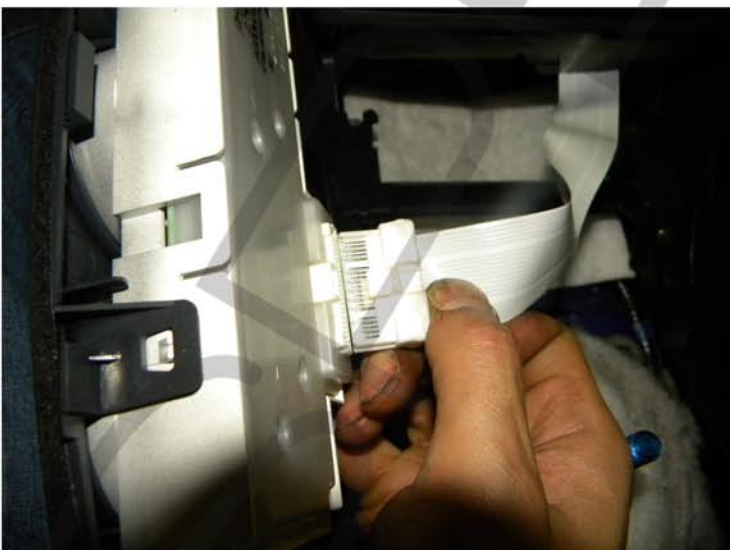
18. Place back the smaller inner rubber boot



19. Place back the outer rubber boot



20. Put back the fabric padding



21. Plug back the harness for the temperature control council



22. Place back the council to its original location



23. Put back the washer ring



24. Screw back on the shift knob



25. Replace the 12mm bolt connecting the shifter to the shift link



26. Place back the rubber boot



27. The installation now is complete.

