

SPEC-D Tuning

1998-2004 DODGE INTREPID PROJECTOR HEADLIGHTS INSTALLATION INSTRUCTIONS



If you experience any difficulties that the instruction did not cover, Please seek local auto shop for advise. Please wear protection before you work on your vehicle.

An assistant is helpful when removing the front bumper.

Please be careful while working with the bumper or body part to avoid scratching.

Do not make direct contact with the halogen bulb or the wire assembly until the unit has cooled down after use.

TOOLS AND SUPPLIES REQUIRED

¼" Drive Ratchet

¼" Drive Extensions (3 to 6 inches)

7mm Socket

If your Headlight is Halo type, you also need:

Wire Stripper

Wire Crimper

4 Blue Quick Splice Wire Connectors

4 Blue Male Quick Wire Connectors

4 Blue Female Quick Wire Connectors

2 Red Wires (8 inch)

2 Black Wires (8 inch)

Product Part Numbers:

2LHP-ITRE98-TM

2LHP-ITRE98JM-TM



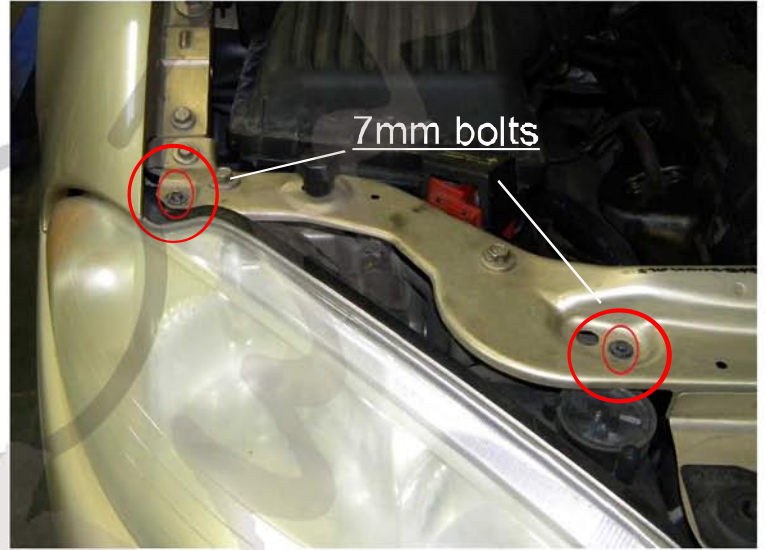
DODGE INTREPID PROJECTOR HEADLIGHTS INSTALLATION INSTRUCTIONS



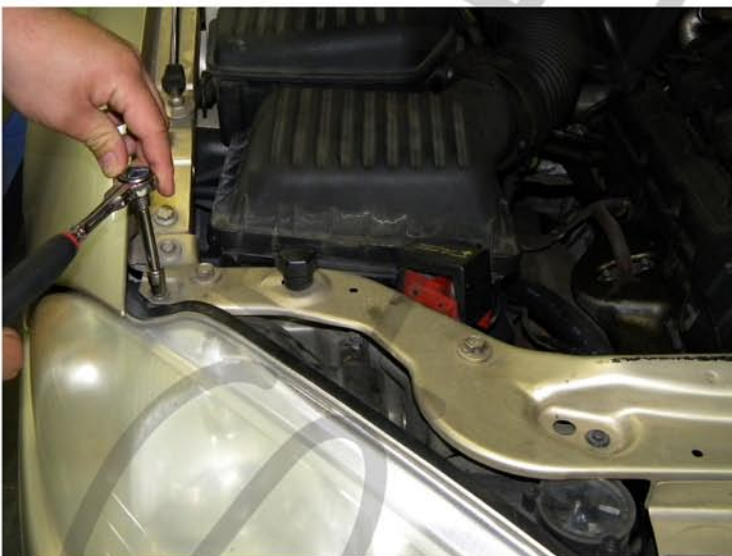
If you experience any difficulties that the instruction did not cover, Please seek local auto shop for advise.
Please wear protection before you work on your vehicle.
An assistant is helpful when removing the front bumper.
Please be careful while working with the bumper or body part to avoid scratching.
Do not make direct contact with the halogen bulb or the wire assembly until the unit has cooled down after use.



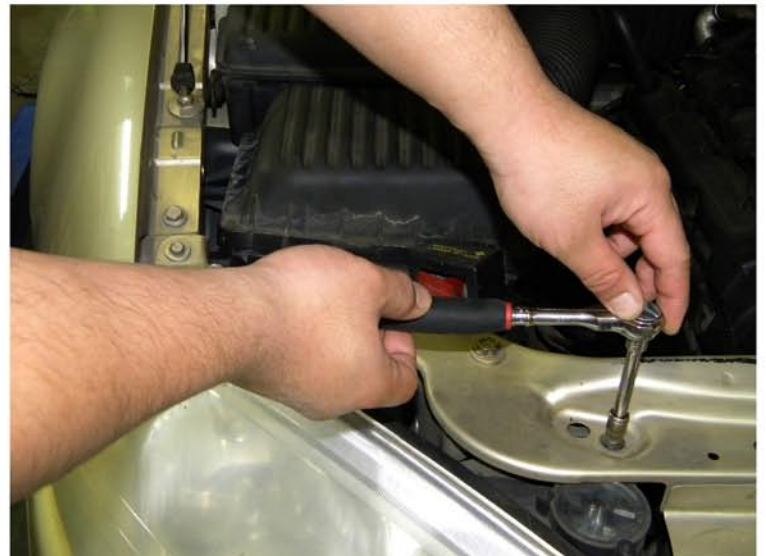
1. Open the hood



2. Remove two 7mm bolts



3. Remove the outer one first



4. Then remove the inner one



5. Pull out the headlight a little bit



6. Disconnect all connector from the headlight



7. Remove the headlight



8. Connect all connectors
please see the "Halo and L.E.D. installation instructions"
If your headlights don't have HALO or L.E.D. You can
skip the installation instructions.



9. Install the headlight



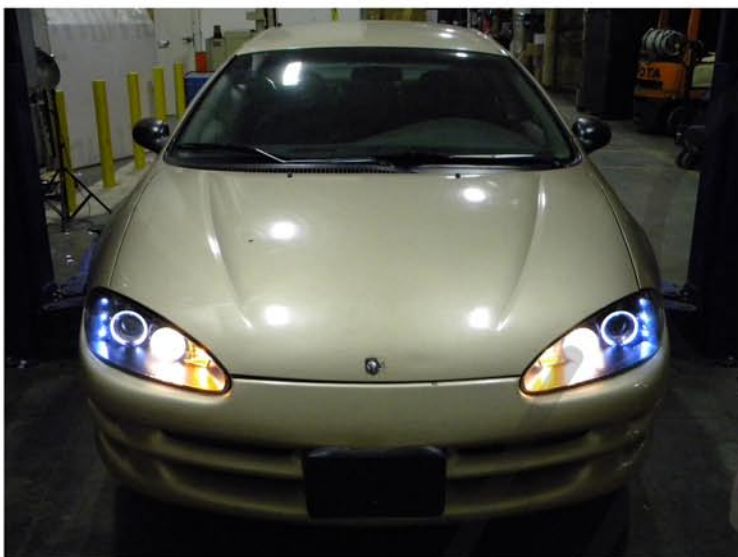
10. Install two 7mm bolts



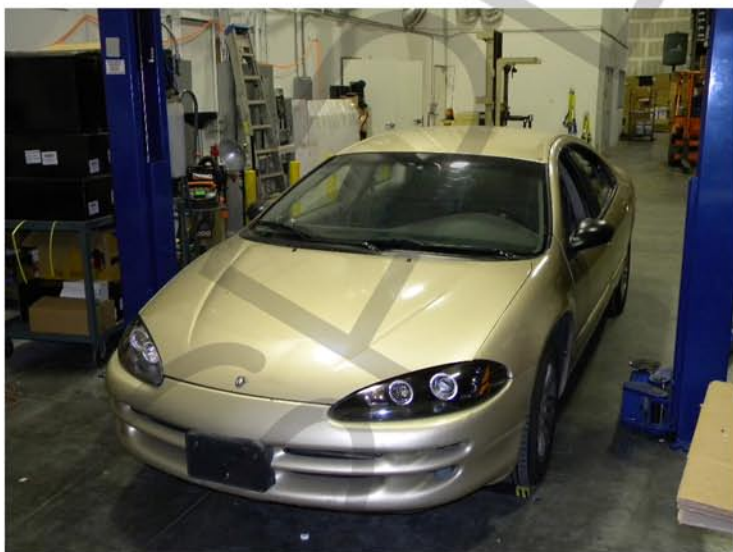
11. Install the outer one first



12. Then install the inner one



13. Please repeat the picture order from 1 to 13 for the opposite side



14. The installation now is complete